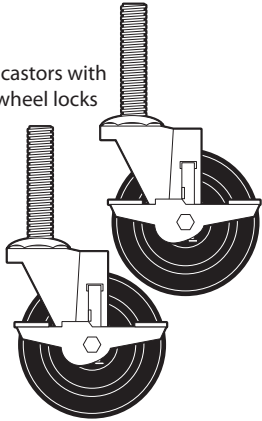
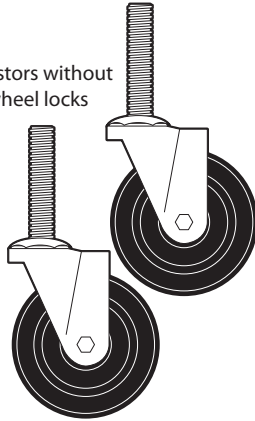


# Parts list

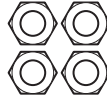
2 castors with wheel locks



2 castors without wheel locks



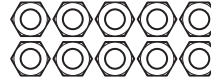
4 big hex nuts



4 big lock washers



10 small hex nuts



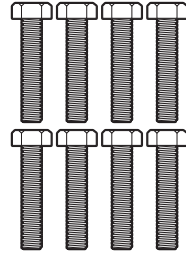
10 small lock washers



10 washers



8 long bolts



2 short bolts



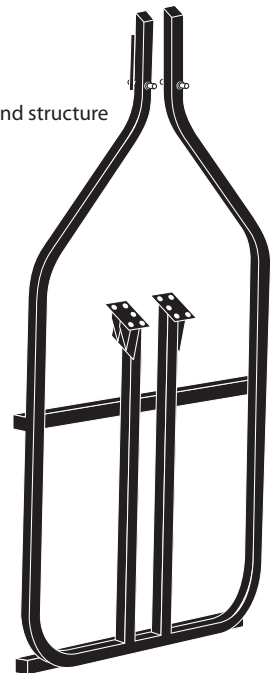
2 square cross section rails (in box 2 of 2)



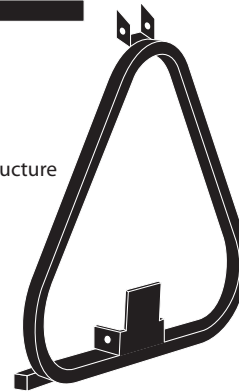
2 'L' angled cross section rails (in box 2 of 2)



tall end structure



short end structure



Assembled cart can hold up to 24 stands, depending on stand model (KB95 stands shown)

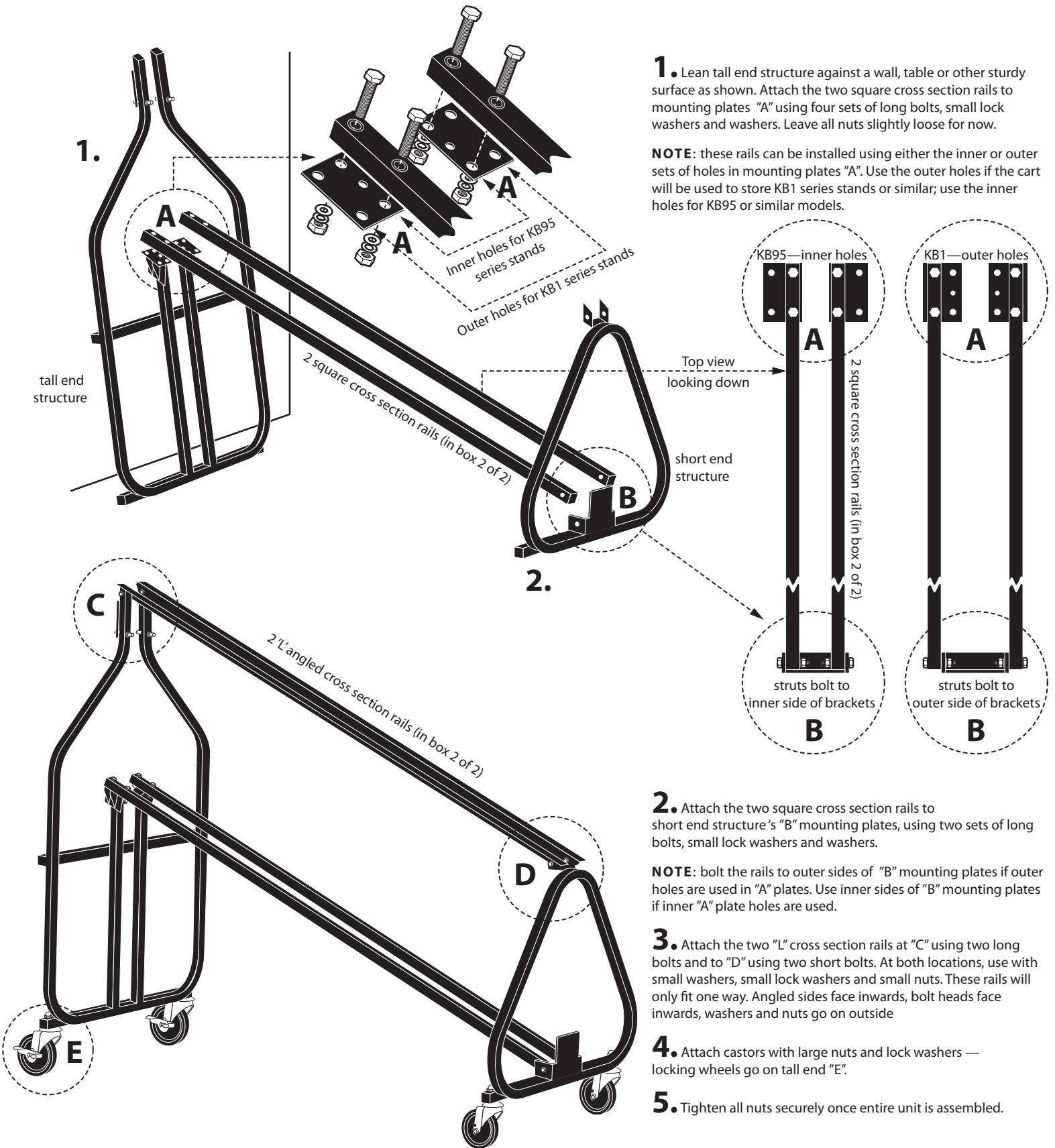
*Hamilton* STANDS  
**KB100**  
MUSIC STAND STORAGE CART

# Hamilton STANDS

# KB100

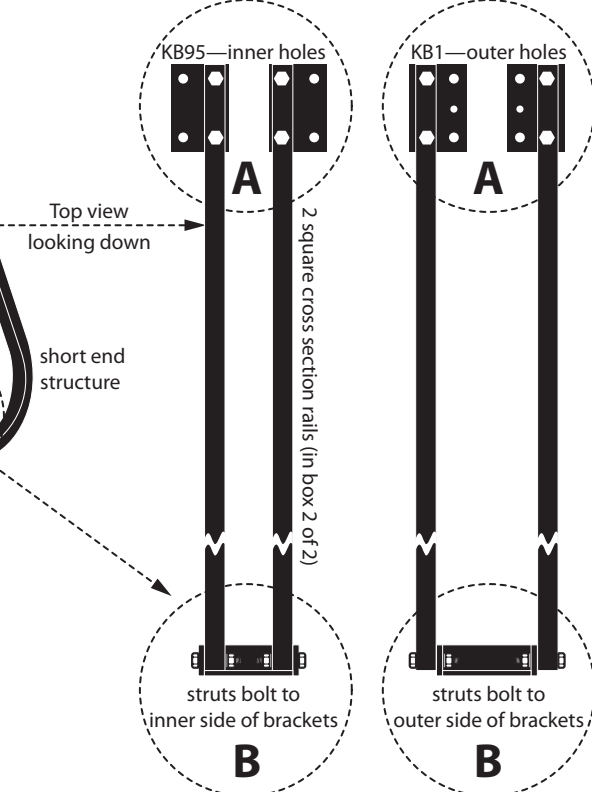
## MUSIC STAND STORAGE CART

# Assembly instructions



**1.** Lean tall end structure against a wall, table or other sturdy surface as shown. Attach the two square cross section rails to mounting plates "A" using four sets of long bolts, small lock washers and washers. Leave all nuts slightly loose for now.

**NOTE:** these rails can be installed using either the inner or outer sets of holes in mounting plates "A". Use the outer holes if the cart will be used to store KB1 series stands or similar; use the inner holes for KB95 or similar models.



**2.** Attach the two square cross section rails to short end structure's "B" mounting plates, using two sets of long bolts, small lock washers and washers.

**NOTE:** bolt the rails to outer sides of "B" mounting plates if outer holes are used in "A" plates. Use inner sides of "B" mounting plates if inner "A" plate holes are used.

**3.** Attach the two "L" cross section rails at "C" using two long bolts and to "D" using two short bolts. At both locations, use with small washers, small lock washers and small nuts. These rails will only fit one way. Angled sides face inwards, bolt heads face inwards, washers and nuts go on outside

**4.** Attach castors with large nuts and lock washers — locking wheels go on tall end "E".

**5.** Tighten all nuts securely once entire unit is assembled.